



N₂O CALIBRATION KIT SUBSCRIPTION
 CONTACT SALES@UNISENSE-ENVIRONMENT.COM
WWW.UNISENSE-ENVIRONMENT.COM

N₂O Wastewater Sensor



Step by step
calibration
procedure

UNISENSE 
ENVIRONMENT 



1

Follow these few steps to calibrate the N₂O Wastewater Sensor. We **recommend re-calibrating every second month** and when the average wastewater temperature changes by more than 3 degrees.



2

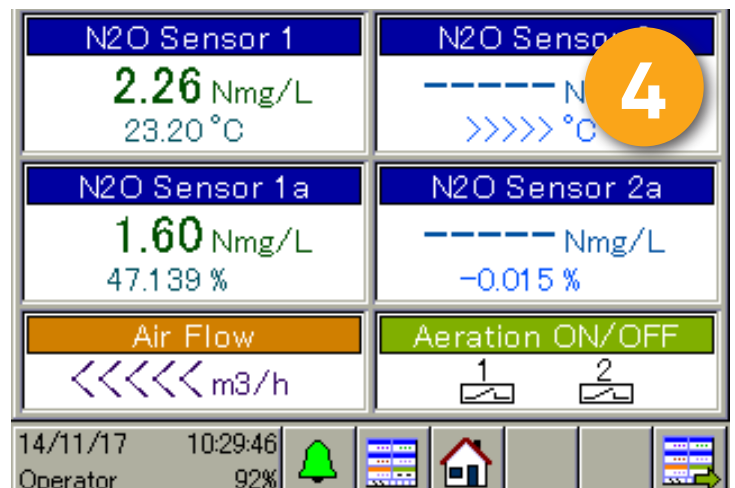
After installing the N₂O Wastewater Sensor or replacing the sensor head, let the sensor **stabilize overnight**. This will give the best calibration result with zero drift!



3

Fill a stable bucket with 4 liters of tap water. The tap water temperature should be close to that of the process water. Measure the temperature of the tap water and place the sensor in the bucket. Let the sensor signal stabilize.

This temperature must be entered in step **10** below !



4

On the controller screen, check for a stable sensor signal. Press the grey lowest left button, reading Operator (Password: 1234) to access the **Device menu**.

