



Scan the QR code for calibration video guide



## N<sub>2</sub>O CALIBRATION KIT SUBSCRIPTION

CONTACT [SALES@UNISENSE.COM](mailto:SALES@UNISENSE.COM)

[WWW.UNISENSE-ENVIRONMENT.COM](http://WWW.UNISENSE-ENVIRONMENT.COM)

# N<sub>2</sub>O Wastewater Sensor



Step by step calibration procedure

**UNISENSE**   
**ENVIRONMENT** 



Follow these few steps to calibrate the N<sub>2</sub>O Wastewater Sensor. We **recommend re-calibrating every second month**, or if the average wastewater temperature changes by more than 3 degrees Celsius.

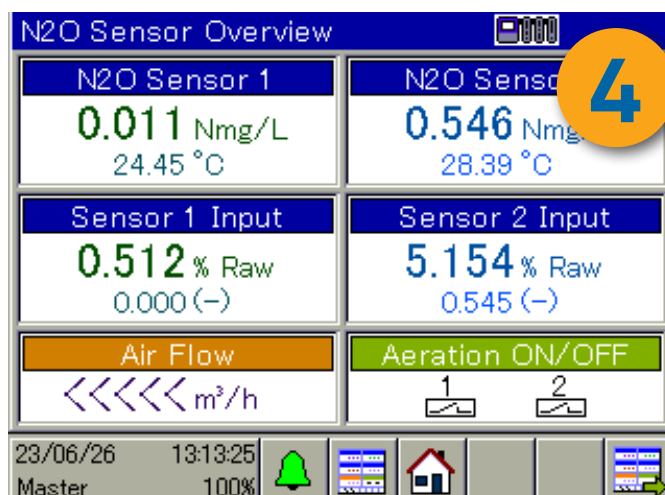


After you have installed the N<sub>2</sub>O Wastewater Sensor or replaced the sensor head, let the sensor **stabilize overnight**. This will give the best calibration result. We recommend that you leave the sensor in clean water to avoid cleaning, except if there is a risk of frost.

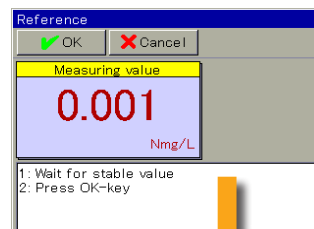
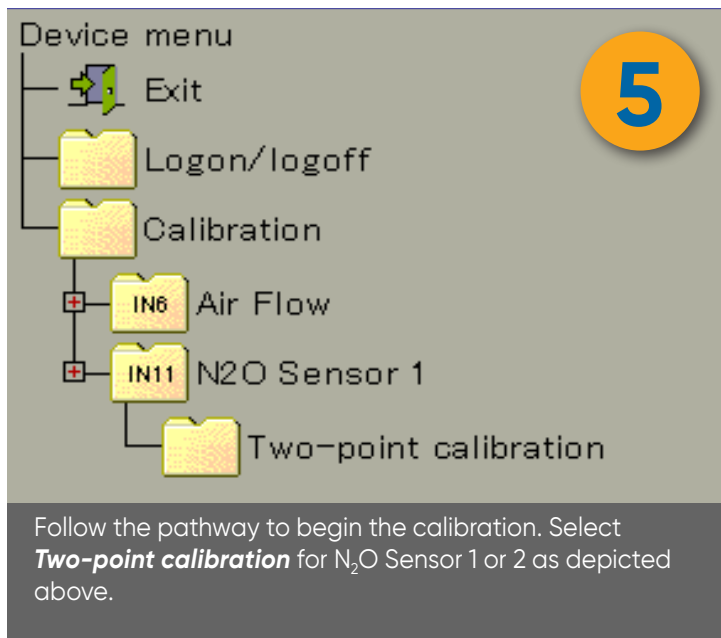


Fill a stable bucket with 4 liters (**NOTE: for MR and HR sensors, see manual**) of tap water. The tap water temperature should be close to that of the process water. Measure the tap water temperature\* and place the sensor in the bucket. Let the sensor signal stabilize (min. 1 minute).

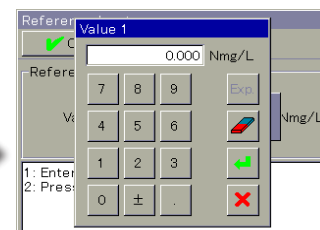
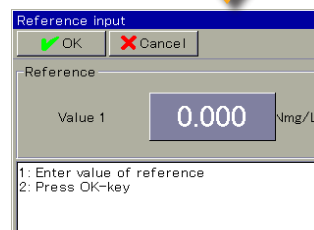
\*This temperature must be entered in step **10** below !



On the controller screen, check for a stable sensor signal. Press the grey button on the bottom left, reading Operator (Password: 1234) to access the **Device menu**.



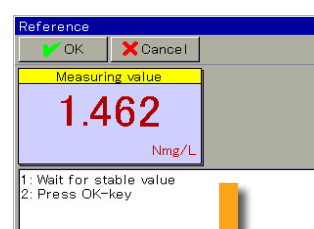
Calibration step 1/2



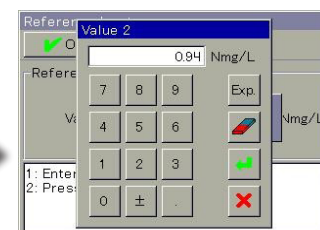
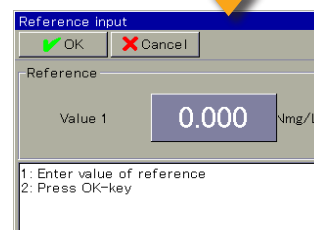
When the signal is stable, press OK to open 'Reference input'. Press the blue number field, input 0 as 'value 1'. Then press OK.



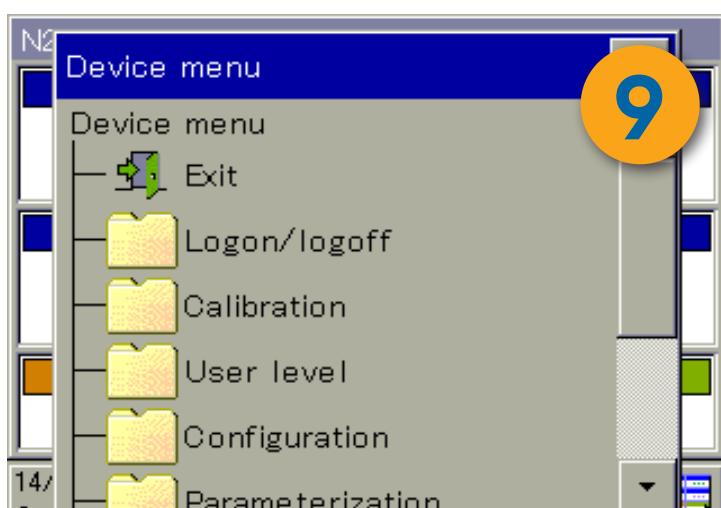
Break the ampule's neck. Continue immediately to use the syringe and needle to slowly draw out **5 mL** of the liquid. Inject the stock solution to the tap water. Stir gently with the N<sub>2</sub>O Sensor to dissolve the solution in the water. **IMPORTANT:** Inject the stock solution under water to avoid contact with air.



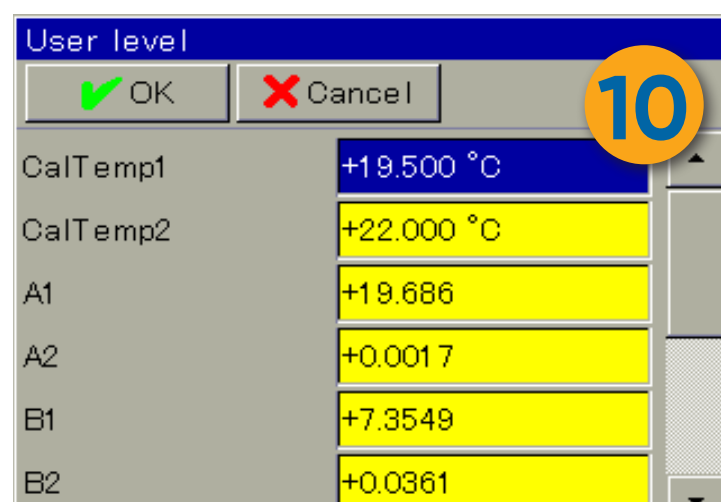
Calibration step 2/2



You will now see the reading increase. **IMPORTANT:** Press OK just after the signal has stabilized, as the signal will start to drop shortly after. Press the blue number field and enter the value 0.94. Press OK. Check that the zero point is close to 0 and that the Slope is between 15% and 150%.



Finally enter the **Device menu** again (check step 5). Access the **User level** to set the temperature of the tap water from step 3.



For the calibrated sensor, enter the water temperature of the tap water used for calibration and press **OK**. Well done! You have successfully calibrated the sensor. **We recommend that you calibrate again in two months.**