

## REMOVE THE NEED FOR ZERO-CALIBRATIONS



## Autozero for N<sub>2</sub>O Wastewater System

With the Autozero feature, the N<sub>2</sub>O Wastewater System will

- Provide an automatic zero-point calibration in case of negative sensor values
- Signal an alarm\* when the temperature changes by  $\pm 3^{\circ}\text{C}$  to tell you when a 2-point calibration is needed

### Automatic Zero-Point Calibration

The Autozero feature will set in to ensure that negative values do not impact your emissions reporting by performing an automatic zero-point calibration. So you can rest assured that the sensor is performing as planned.

The result will be an output with precise, correct, and clean data for your nitrous oxide emissions reporting.

### How does it work?

If the sensor shows steady values between 0.00 and  $-0.05 \text{ N}_2\text{O-N mg/L}$  for 15 min, the Autozero feature will correct the values so that your N<sub>2</sub>O concentration shows as  $0.00 \text{ N}_2\text{O-N mg/L}$ . If the values are continuously lower than  $-0.05$ , Autozero will raise an alarm\*, and you may need to perform a new 2-point calibration.

In other words, you no longer need to perform a manual zero-point calibration, because the Autozero feature will handle that for you.

\*An alarm is only possible with ModBus.



### How do you get Autozero?

#### New customer

You will get Autozero as an integrated feature in your N<sub>2</sub>O Wastewater System.

#### Existing customer

If you have received your system before 1 October 2023, you can order the Autozero circuit board at [sales@unisense.com](mailto:sales@unisense.com)

Check your local electrical regulations and ensure that you use a certified electrician to do the installation.

## You can also look forward to

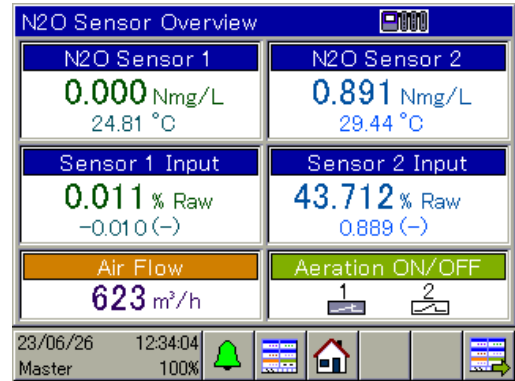
With Autozero, we have simplified the main screen on your N<sub>2</sub>O Wastewater Controller. The screen will now show you information on mg N<sub>2</sub>O-N/L and temperature for each sensor along with each sensor's raw value. So you can always quickly check the raw value and simple sensor readings.

## Improved Temperature Compensation

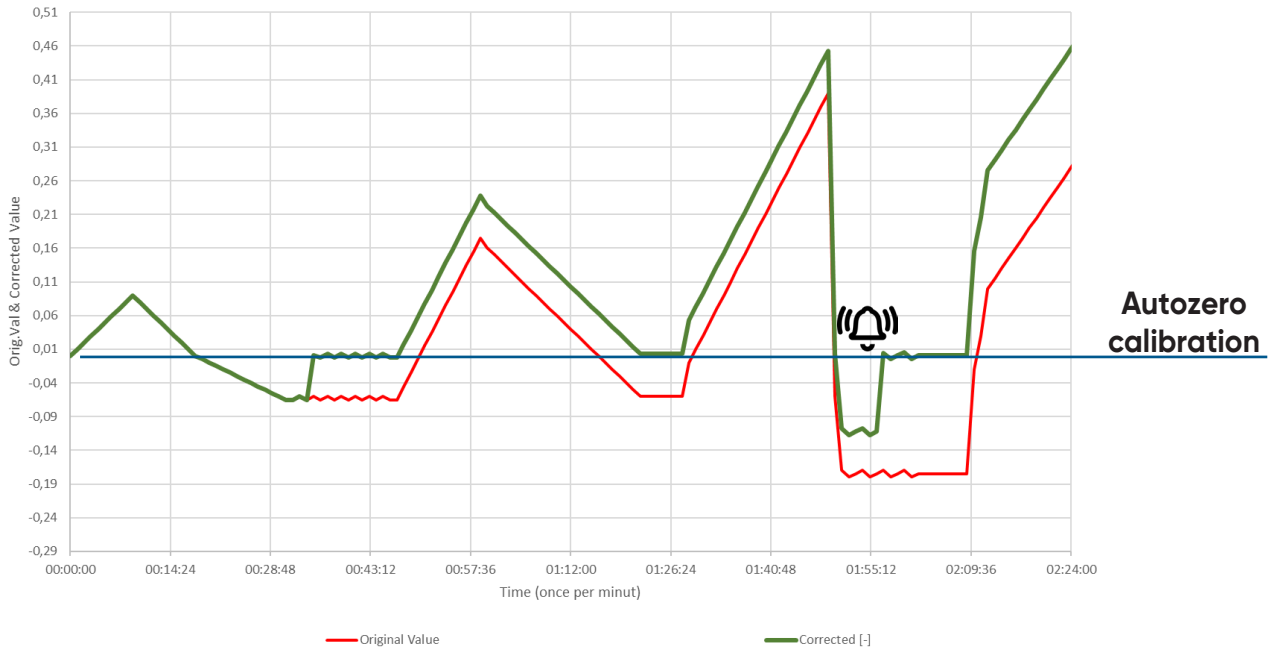
We have learned more about the electrochemistry's temperature through years of intensive data collection. With this knowledge, we have improved the sensor's temperature compensation which means that you can expect no more than ±2.5% error between 3 and -3 °C from the calibrated temperature.

## Autozero for N<sub>2</sub>O Wastewater System

- Automatic zero-point calibration in case of negative sensor values
- Improve your nitrous oxide emissions reporting
- Signal an alarm when the temperature changes by ± 3°C



AutoZero Drift Correction



[FOR MORE INFORMATION](#)

[WWW.UNISENSE-ENVIRONMENT.COM](http://WWW.UNISENSE-ENVIRONMENT.COM)

[SALES@UNISENSE.COM](mailto:SALES@UNISENSE.COM)

