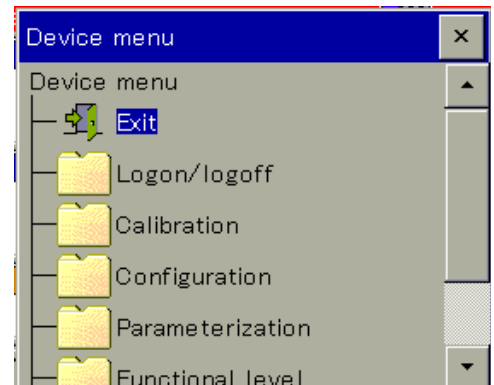


Installation of new N₂O Wastewater Controller Firmware from USB Stick

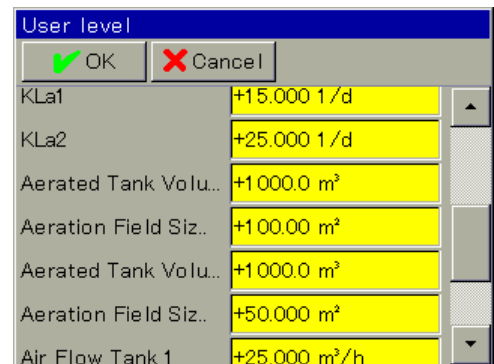
Make sure you have completed the hardware installation before starting the firmware installation. You can easily install new firmware on an N₂O Wastewater Controller. It just requires a few manual steps to be performed before and after the firmware has been installed. Below is a step-by-step guide.

1. Insert the USB you received with the circuit board into the controller. The USB contains a single file, **KONF304.SET**.
2. Enter the system menu in the lower left corner and login as 'MASTER' with pin code '9200'.
3. Enter the 'User level' menu and make a note of the following:
 - a. CalTemp1: _____
 - b. CalTemp2: _____



3.a. If previously changed from default:

- c. KLa1: _____
- d. KLa2: _____
- e. Aerated Tank Vol1: _____
- f. Aeration Field Size1: _____
- g. Aerated Tank Vol2: _____
- h. Aeration Field Size2: _____



3.b. If Profibus is used, enter the 'Configuration' menu and locate the Profibus menu.

Note the following:

- i. Node Address: _____
- j. Endian: _____

4. Insert the USB memory stick into the USB port located at the bottom right of the N₂O Wastewater Controller.
5. A service window will pop up on the screen.
6. Find the menu point called 'USB -> Configuration' and press.
7. A progress bar will come up - it can take a few minutes for the update to complete. **NOTE:** A popup window might tell you that the hardware is incompatible with your system. Press OK anyway. (It is a check if Profibus is installed.)
8. Once finished, press the menu point 'Secure hardware remove' and remove the USB memory stick.
9. Reenter the values noted under point 3., 3.a. and 3.b. in 'User level' and 'Configuration'.
 - 9.a. If Profibus is used, please restart the controller.
10. You are done.

